

KEEPING FAMILIES SAFE

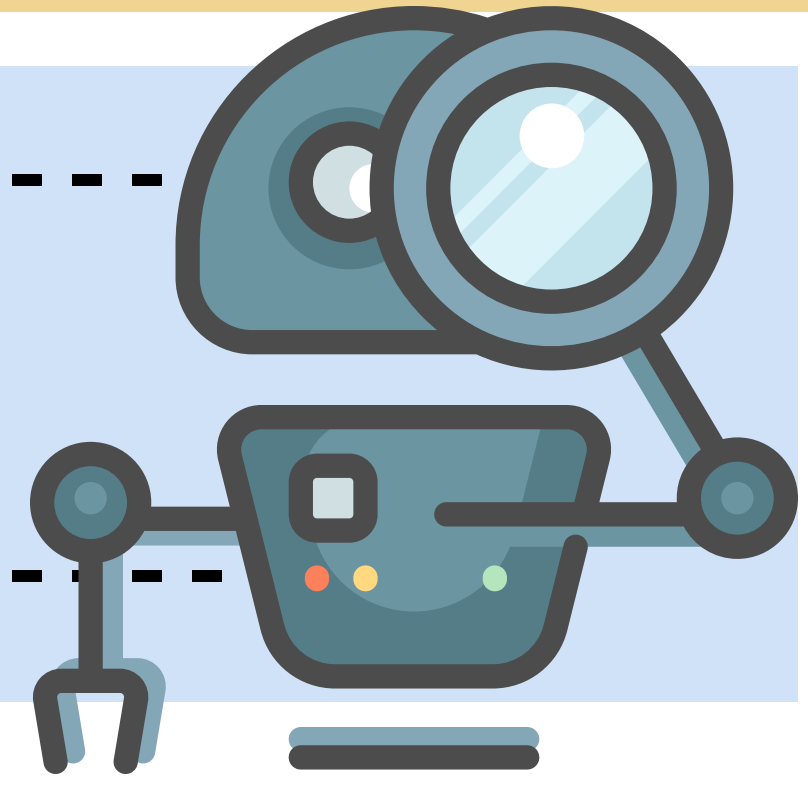
Case Monitoring

This series will explore 6 areas of practice that will support good case management in Family Social Work.



An effective system to monitor and flag cases is **crucial** to any worker who wishes to stay on top of change and provide services that are adaptable and helpful to the situation.

Let's work together to create an effective system for case monitoring!



Case Workers

- Create a case monitoring system that is flexible and intuitive to their own practice
- Ensure that cases with high risk concerns are clearly differentiated for easy monitoring
- Update client's records regularly so that information on case monitoring system is up to date
- Report pertinent changes that could impact client's well-being to supervisor as soon as possible

Supervisors

- Ensure that they have the most updated client listings of all their supervisees
- Propose modifications whenever necessary such that the case monitoring system supervisees are using stay effective and intuitive to practice
- Ensure that supervisees follow the processes instituted by the agency with regards to case monitoring

Organisations

- Institute a system that is able to clearly differentiate cases with risk concerns and keeps a list of such cases that's updated regularly
- Ensure that there are processes put in place to facilitate the flagging process of State referred cases, as well as cases with risk and safety concerns
- Institute clear guidelines to facilitate a common understanding on what constitutes various levels of risk.

Information adapted from the following sources:

<https://www.casemanagementbasics.com/2016/08/case-management-monitoring-services.html>
<http://www.tbistafftraining.info/ToolkitB/S6/S6.0.html>