

KEEPING FAMILIES SAFE

Vulnerable Person-centric Practice



This series will explore 6 areas of practice that will support good case management in Family Social Work.

To effectively engage vulnerable families, workers should remember to review and adapt the following regularly.



Understand the Context of the Families' Issues

Multiple issues and complex needs can feel overwhelming

Focus on the vulnerable person's needs in a whole-of-family approach



Engage the Family with care and sensitivity

Build trust, maintain a respectful relationship and work collaboratively with family

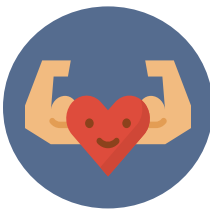


Identify Safety Concerns

Have an open discussion with the family to clearly identify safety concerns

Collaboratively assess with other stakeholders whenever necessary

Address the family's basic survival, safety and security needs first



Acknowledge Family Strengths

Incorporate family's personal strengths and resources

Encourage existing activities that provide good care for the vulnerable



Set Safety Goals

Describe in behavioural terms and specific actions (SMART goals)

Target towards achieving desired outcomes



Maintain Safety

Plan needs to be owned by family

Consider crisis strategies, resources and services needed